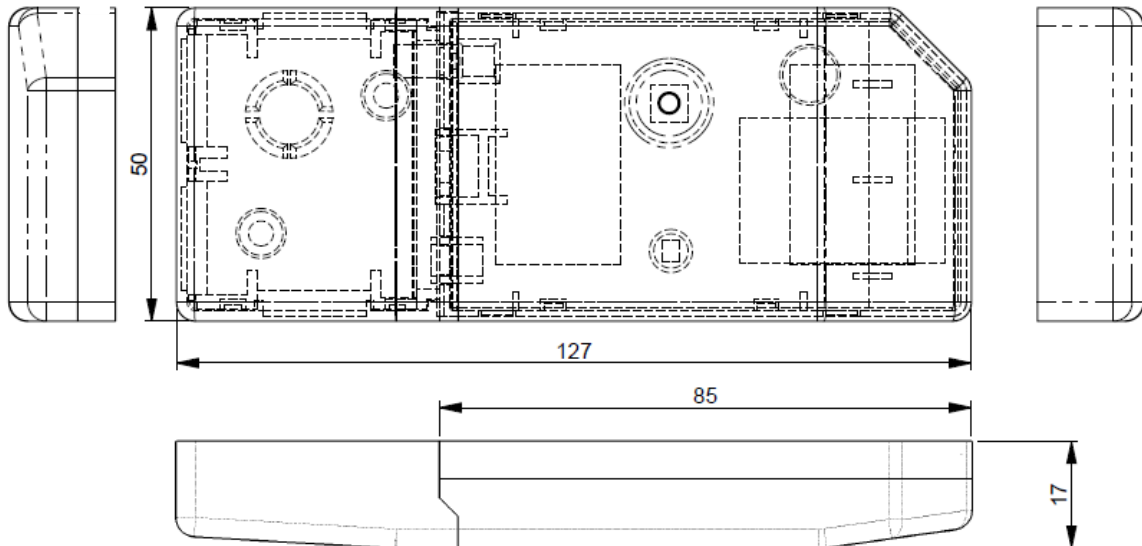




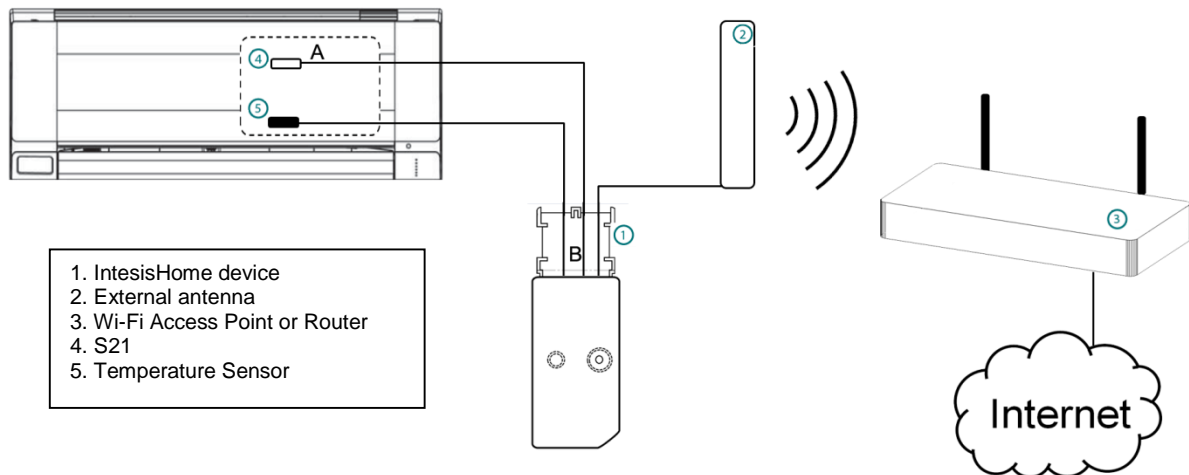
## DK-AC-WiFi-1A

### Wi-Fi interface for Daikin air conditioners



<b>Enclosure</b>	ABS (UL 94 V-0). 2,1 mm thickness
<b>Dimensions</b>	127 x 50 x 17 mm
<b>Weight</b>	80g
<b>Colour</b>	White
<b>Power supply</b>	12V, 60mA typical Doesn't require external power supply (supplied by the AC Unit)
<b>Mounting</b>	Wall
<b>LED indicators</b>	1 x Device status
<b>Operating Temperature</b>	From 0°C to 40°C
<b>Operating humidity</b>	<93% HR, no condensation
<b>Stock humidity</b>	<93% HR, no condensation
<b>RoHS conformity</b>	Compliant with RoHS directive (2002/95/CE).
<b>Certifications</b>	CE conformity to EMC directive (2004/108/EC) and Low-voltage directive (2006/95/EC) <ul style="list-style-type: none"> <li>• EN 60950-1</li> <li>• EN 301489-1 v1.8.1</li> <li>• EN 301489-17 v2.1.1</li> </ul>

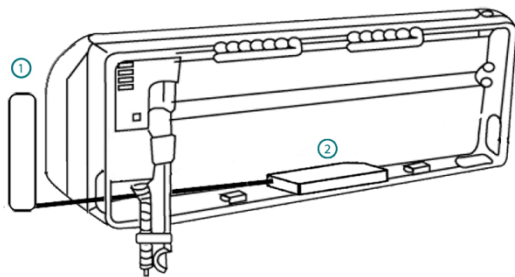
## Wire connection



1. Unplug the Air conditioner (AC) unit from the power supply line.
2. Access to the main Printed Circuit Board.\*
3. Locate the socket connector marked as S21\*
4. Select a location for the IntesisHome device.
5. Connect the A-end (the long one) of the supplied cable to the Air Conditioner S21 connector and the B-end (the short one) to the device AC connector.
6. Connect the external antenna into the antenna connector. Make sure you screw the antenna connector in a clockwise direction until it stops.
7. Install the Temperature Sensor.
8. Place the antenna outside the AC, preferably in a vertical position and pointing directly to the Wi-Fi Router or Access Point (AP).
9. Close the Air Conditioner unit.
10. Plug the AC to the power supply line. If connection with the Air Conditioner has been successful, IntesisHome device LED will start blinking Green and then will change to steady Green.

\* See Daikin installation or service manual for detailed information

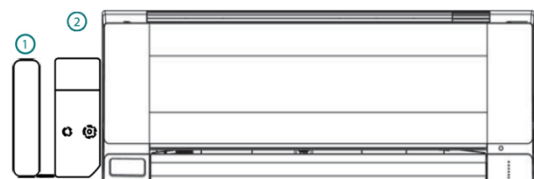
## Device location



### Device Installed inside the AC unit or hidden

It allows a neater installation as the user cannot see the device during normal operation.

- The indication LED and the button are not going to be accessible by the user.
  - o The LED is an indicator of the status of the device both during connection and normal behavior.
  - o The button is used to reconfigure the device if the Access Point (AP) configuration changes. If this happens the user will need to access the inside of the Air Conditioner.
- If there is not enough space, the following actions can be performed:
  - o If it is due to water pipes, change the side of the AC where they are connected to get more space inside the AC unit.
  - o Otherwise the support surface can be removed



### Device Installed outside the AC unit

The following points need to be taken into account if the device is installed outside the AC.

- The device can be fixed both using screws or double side tape.
- The cable lid has several options in order to direct the cables to the desired direction.